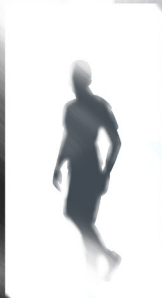


Welcome to

PROCESSING



The
First
Issue.



CREATED BY
CLYDE

Published online through **Substack**
and at **CreatedbyClyde.com**

PROCESSING

Issue One:

Welcome to Central Processing

Did you enjoy this? Please share with others or show some support at CreatedbyClyde.com. Every bit helps and gives me the opportunity to finish this story in full.

CREATED BY

Clyde

EDITOR

Kyle Harper



**CREATED BY
CLYDE**

All characters and events in this comic - even those based on real people, are entirely fictional. The following pages reflect the ideas and experiences of its creator and are intended to convey real-life experiences through a series of fictitious events that evoke a laugh, some thoughts or some feelings for its readers.

With that being said and the legal overlords appeased through the above disclaimer - let the creator's thoughts be known that the 'truth' of this story is largely open to the interpretation of its reader. The line between fact and fiction is impossible to prove and 'Processing' will largely be what you make of it.

THANKS DAD.

Special thanks to dad for
the significant impact
you've had on this story,
the life we shared and
the people that had the
privilege of knowing you.

I miss you every day.



what the fu-

Attention everyone, we get it - you are currently asking yourself "what the fuck is going on?"

Please cool your shit and wait in line, as much as it pains you to do so.





Listen up, because I will only say this once.

you are here because you fit Archetype 37B.

Everyone around you is pretty much the same in their belief systems, with only minor artificial differences in their characteristics.

you do not like that I am pointing out the similarities with those around you,

and are about to tell me to "fuck off, I can't be that easy to identify."

well you are - just save it for your 10-minute consultation with the prime directives in processing Hall 038C.



you have a ticket in your hands that you can reference while you stew on "what the fuck" is going on.

I know you want to hear more, but that is all I have for you.

if you get out of line, which I know you all want to, you will be placed at the back of the line with a new ticket.



This is a pre-recorded message brought you by the Central processing department.



cp
central
PROCESSING
department

well
FUCK ME
I guess I'll wait.





BLAM



you made it!



please enter office
G4 on your right.



wait, are you

Let me stop you there. I
look this way to ease your
transition through processing.

I am not Jessica and I highly
recommend you drop this now and focus
on what questions you would like
answered during your consultation.



But I-



NEXT!



please, close the
door and sit.





WHAT THE FUCK IS GOING ON?

A quick guide to the Central
Processing Department



PREPARED FOR
Archetype 3JB

 Central Processing
DEPARTMENT

WELCOME TO CENTRAL PROCESSING

A Department at The Agency

WHO WE ARE

The Agency exists to provide a fair and equitable system for life after death.



PREPARED FOR
Archetype 3JB



That's Right.

YOU ARE DEAD!

You were one of those unfortunate people that inflicted a fatal wound to yourself in order to avoid the existential dread that comes with finite life!



PREPARED FOR
Archetype 3JB



NO JUDGEMENT FROM US.

We get it. Plenty of our employees in Processing were just like you at one point.



PREPARED FOR
Archetype 3JB



Unlike many others out there that believed in an afterlife,

YOU DID NOT.



PREPARED FOR
Archetype 3JB



FOR BELIEVERS

For the believers out there, they are each in their rightful place "in heaven" as they say, among their community!

PLACES AFTER DEATH (PADS)

When multiple people believe in the same heaven or place after death (PADs for short), they live, work and play together forever in their own special world!



PREPARED FOR
Archetype 3JB



A SPECIAL THANKS.

Unlike those people, you believed in nothing and boy did you stand by those convictions! But that belief was shared by so many people, the Agency was created! So thank you for your contributions to our organization.



PREPARED FOR
Archetype 3JB



AGENCY IS THE MOST IMPORTANT VALUE OF THE AGENCY.

Central Processing has been established to give you the freedom to find a community now that you're grappling with the failings of your logical brain.



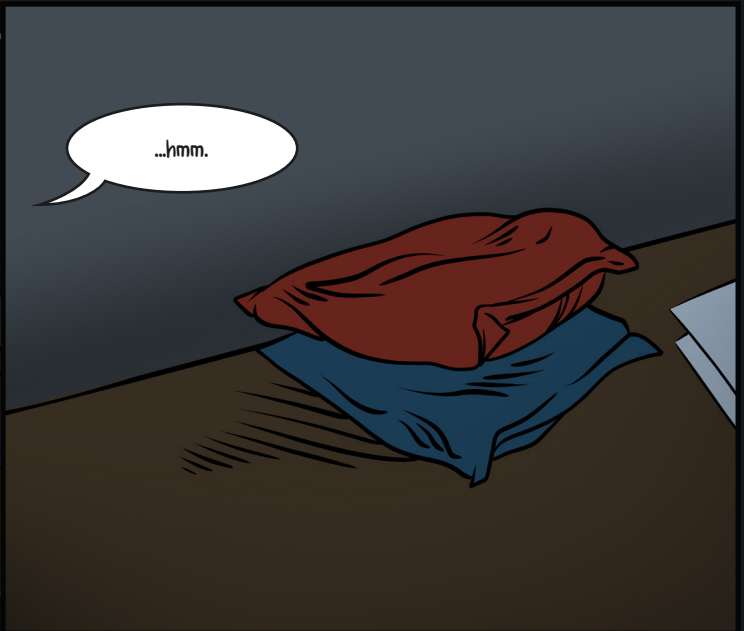
PREPARED FOR
Archetype 3JB



No pressure! You have all of eternity to decide!



...hmm.



..let there be light.

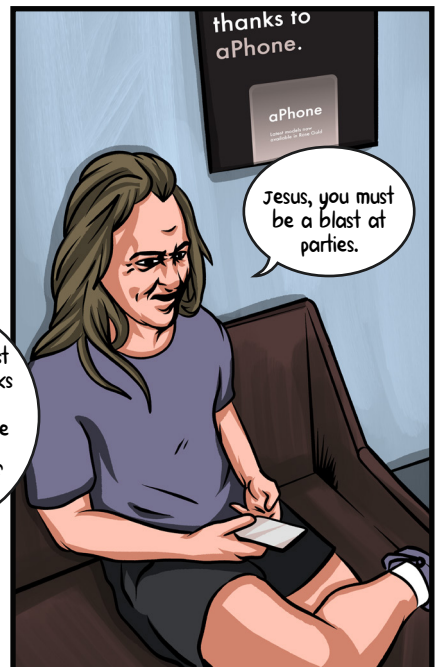


Any other questions?









speaking of which-



don't follow me.




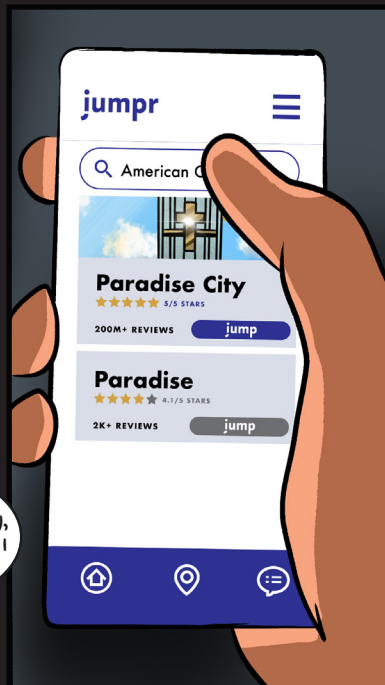


Haven't you waited long enough?

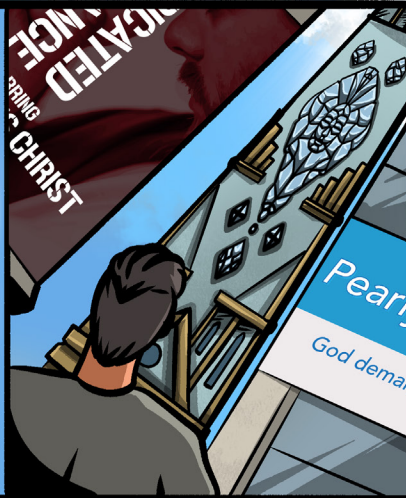
Eternal bliss, only a few clicks away.

SPONSORED BY
jumpr

IN PARTNERSHIP WITH  Central Processing DEPARTMENT



Good morning
Citizens of paradise!
Listen closely to the
Voice of God™.



Coming straight to you
from my mind to yours
- a most intimate
relationship that you
are so incredibly
blessed to experience.

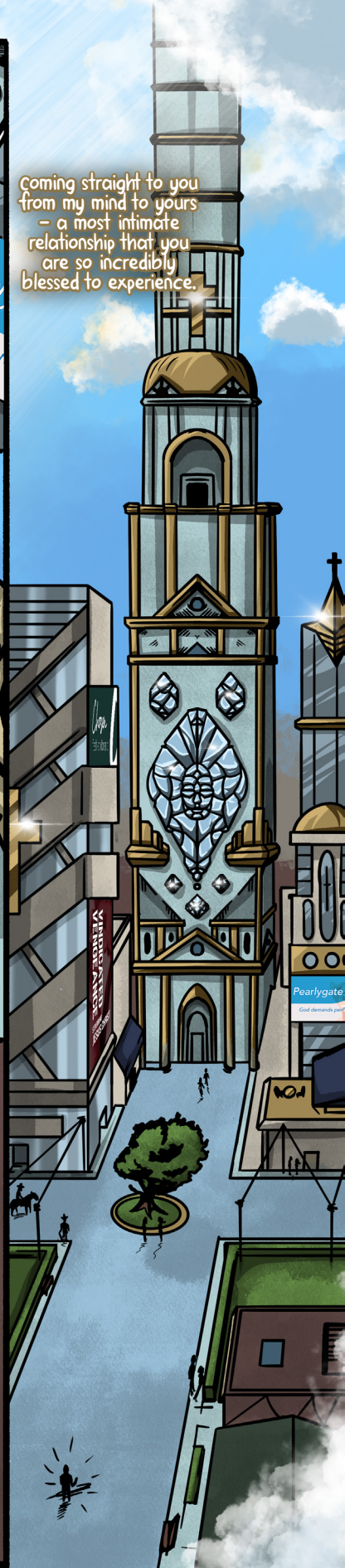
The weather today: perfect.
A great day to explore my
beautiful kingdom and find
exclusive offers on this
glorious day.



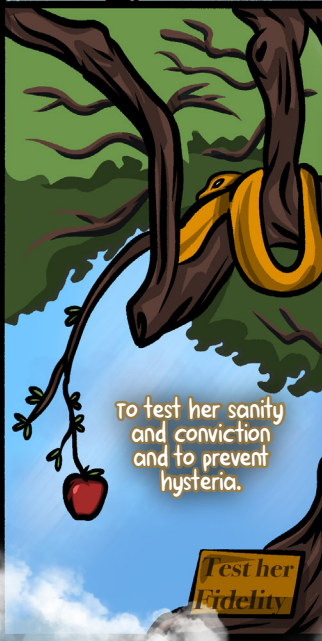
To journey across our
wondrous commercial
district with a pearly
white smile from ear to
ear.



To bask in
God™ Rays,
delivering unto
ye the prosperity
of our most
divine apostles.



To salute our
boys in blue,
upholding the
sacred laws of
God™, the kingdom
and the interests
of His chosen.



To test her
sanity
and conviction
and to prevent
hysteria.

Test her
Fidelity



To enjoy a Joba Cola™
under the lights to
nourish the soul.

it is a perfect day to let loose, spend that hard earned cash and bask in the delights of paradise city.

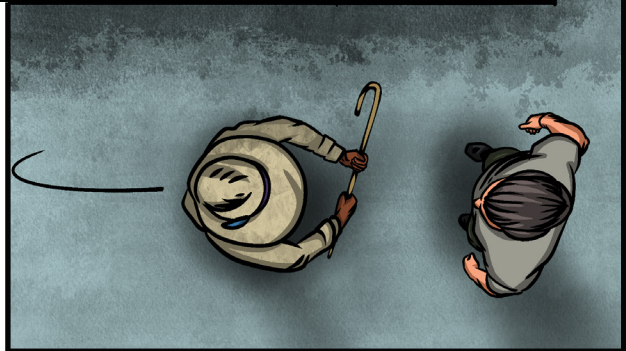
HAAH!
I knew it.

until next time, this is the voice of god™ signing off.

EWW.

Huh?


ptoo











it's not that I don't sympathize with ya.

But if ya'd just put some elbow grease in, maybe we'd let you in to the city limits.

Dressed like that though?

well hell, it's pretty obvious that you're just bad for business.